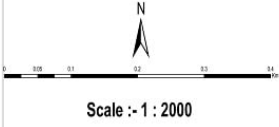




PROPOSED LANDUSE PLAN (2031): PKDA



Batulibhuan - I

Legend

BOUNDARIES

- PKDA Boundary
- Zone Boundary
- Village Boundary
- Plot Boundary
- Govt Land
- CRZ 500m Buffer
- Landmarks

TRANSPORTATION USE ZONE

- Railway
- 24m Road
- 18m Road
- 12m Road
- BRTS
- Existing Road
- Bus Stand / Parking
- Jetty

RESIDENTIAL USE ZONE

- R1-Low Density Residential
- R2-Medium Density Residential
- R3-High Density Residential

COMMERCIAL & BUSINESS USE ZONE

- C1
- C2
- Special Commercial / Tourism

PUBLIC & SEMI-PUBLIC USE ZONE

- Institutional / Public Utilities
- Special Institutional

UTILITY & SERVICES USE ZONE

- Major Utility

INDUSTRIAL USE ZONE

- Industrial

OPEN SPACE USE ZONE

- Recreational

AGRICULTURAL USE ZONE

- Agriculture

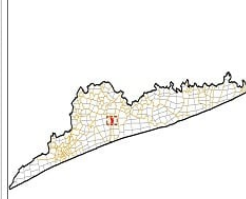
CONSERVATION USE ZONE

- Forest
- Wet Lands
- Water Bodies
- Religious Centers
- Aquifer Area

REFERENCE FILES FOR PROPOSED LANDUSE MAP

- ANNEX A : Residential Use Zone - Consisting R1, R2 and R3
- ANNEX B : Commercial Use Zone - C1 and C2
- ANNEX C : Special Commercial Zone-Tourism Related Activities
- ANNEX D : Public & Semi Public Use Zone
- ANNEX E : Special Institutional Use Zone
- ANNEX F : Light Industrial Use Zone
- ANNEX G : Utility & Services Use Zone
- ANNEX H : Open Spaces Use Zone
- ANNEX I : Transportation Use Zone
- ANNEX J : Agricultural Use Zone
- ANNEX K : Conservation Use Zone - Forest, Waterbodies, Wetlands, Coastline, Aquifer Areas

KEY MAP



- PKDA Boundary
- Selected Village
- Village Boundary - PKDA
- Village Cluster

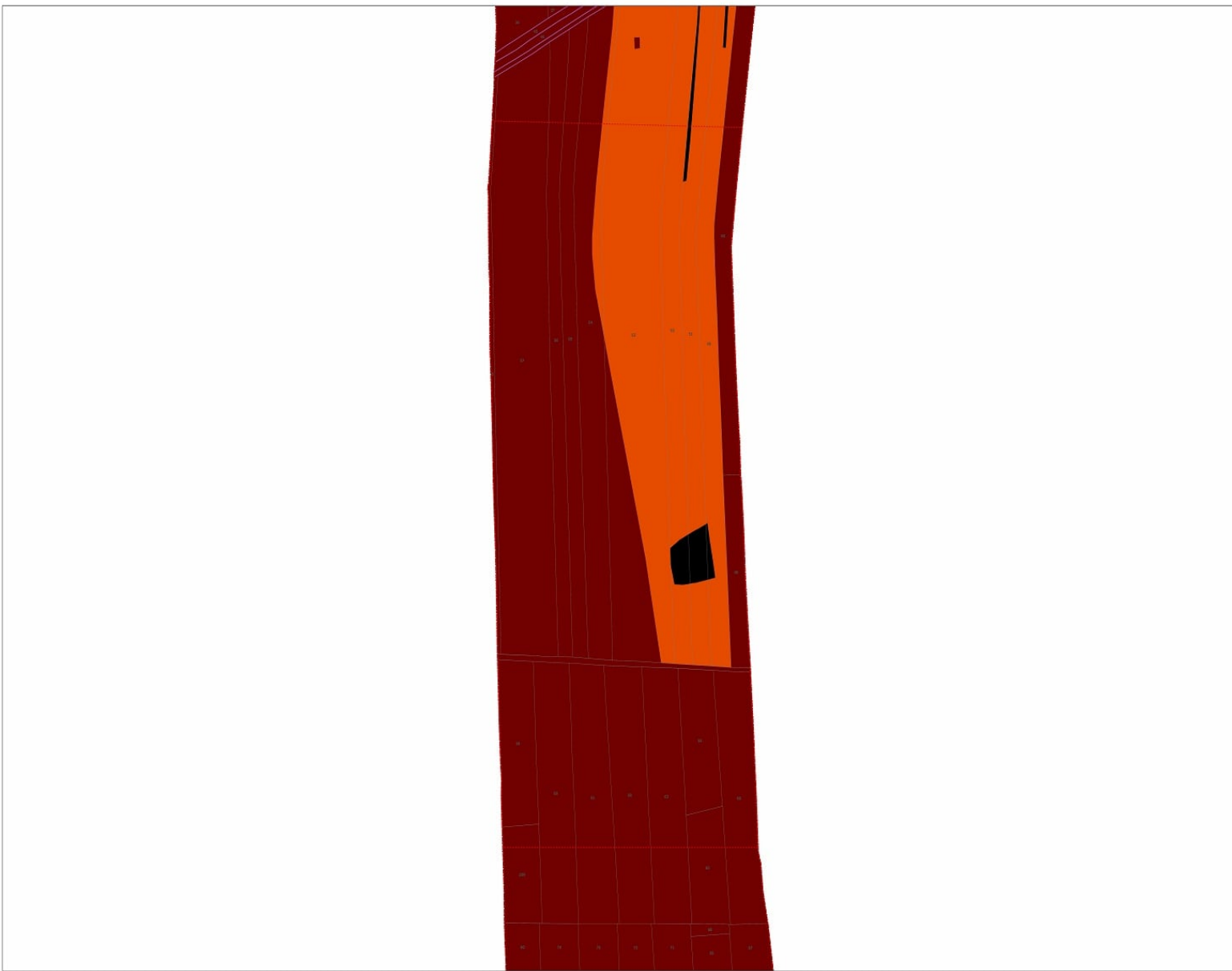
PROJECT
COMPREHENSIVE DEVELOPMENT PLAN FOR
PKDA AREA, 2031

PREPARED FOR
PURI KONARK DEVELOPMENT AUTHORITY
(PKDA), PURI - ORISSA

PREPARED BY
CENTRE FOR ENVIRONMENTAL
PLANNING & TECHNOLOGY
K.C. CAMPUS UNIVERSITY ROAD,
NARANSIPURA, AHMEDABAD - 38
www.cept.ac.in Phone : (079) 26302470

BASE DATA PREPARED BY
ORISSA SPACE APPLICATION
CENTRE, BHUBANESWAR

Disclaimer: - Government land use information is gathered from multiple sources such as Satellite Images, Shaded relief, etc. PKDA Office and Land Office under Collection of Plot over a period of 13 years starting from Jan-2011. Data collected has been considered as authentic and there has been no modification or updation. Maps are prepared on the specified scale in the contract, however some additional maps showing information of revenue plots (numbered) within each village cannot be laid at the mentioned scale. Maps showing such information may be used / referred or reproduced in 20% copy or higher to meet the need. - Aquifer Area boundaries and CRZ have been acquired and digitized from other sources than OSAC. - In addition to OSAC land boundaries, there have been a field through ground verification & terrain Research.



PROPOSED LANDUSE PLAN (2031): PKDA

Scale :- 1 : 2000

Batulibhuan - II

Legend

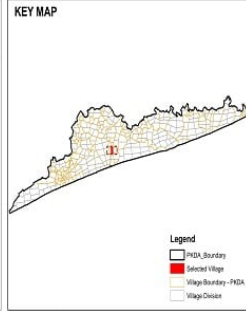
- BOUNDARIES**
- PKDA Boundary
 - Zone Boundary
 - Village Boundary
 - Plot Boundary
 - Govt Land
 - CRZ 500m Buffer
 - Landmarks

- TRANSPORTATION USE ZONE**
- Railway
 - 24m Road
 - 18m Road
 - 12m Road
 - BRTS
 - Existing Road
 - Bus Stand / Parking
 - ⊙ Jetty

- RESIDENTIAL USE ZONE**
- R1-Low Density Residential
 - R2-Medium Density Residential
 - R3-High Density Residential
- COMMERCIAL & BUSINESS USE ZONE**
- C1
 - C2
 - Special Commercial / Tourism
- PUBLIC & SEMI-PUBLIC USE ZONE**
- Institutional / Public Utilities
 - Special Institutional
- UTILITY & SERVICES USE ZONE**
- Major Utility

- INDUSTRIAL USE ZONE**
- Industrial
- OPEN SPACE USE ZONE**
- Recreational
- AGRICULTURAL USE ZONE**
- Agriculture
- CONSERVATION USE ZONE**
- Forest
 - Wet Lands
 - Water Bodies
 - Religious Centers
 - Aquifer Area

- REFERENCE FILES FOR PROPOSED LANDUSE MAP**
- ANNEX A : Residential Use Zone - Consisting R1, R2 and R3
 - ANNEX B : Commercial Use Zone - C1 and C2
 - ANNEX C : Special Commercial Zone-Tourism Related Activities
 - ANNEX D : Public & Semi Public Use Zone
 - ANNEX E : Special Institutional Use Zone
 - ANNEX F : Light Industrial Use Zone
 - ANNEX G : Utility & Services Use Zone
 - ANNEX H : Open Spaces Use Zone
 - ANNEX I : Transportation Use Zone
 - ANNEX J : Agricultural Use Zone
 - ANNEX K : Conservation Use Zone - Forest, Waterbodies, Wetlands, Coastline, Aquifer Areas



PROJECT
COMPREHENSIVE DEVELOPMENT PLAN FOR
PKDA AREA, 2031

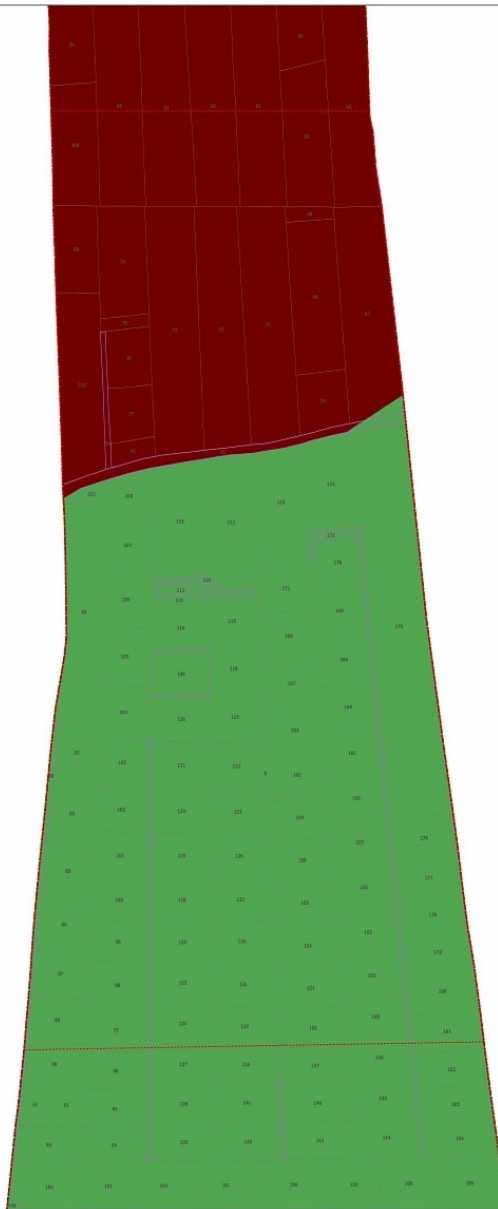
PREPARED FOR
PURI KONARK DEVELOPMENT AUTHORITY
(PKDA), PURI - ORISSA

PREPARED BY
CENTRE FOR ENVIRONMENTAL
PLANNING & TECHNOLOGY
K.C. CAMPUS UNIVERSITY ROAD,
NARAYANIPURA, AHMEDABAD - 38
www.cept.ac.in Phone : (079) 26302470

BASE DATA PREPARED BY
ORISSA SPACE APPLICATION
CENTRE, BHUBANESWAR

Disclaimer:

- Government land use information is gathered from multiple sources such as Technical Offices, District level/district, PKDA Office and Land Office under Government of Puri over a period of 13 years starting from Jan-2011. Data collected has been considered as authentic and hence has been used without any further verification or updation.
- Maps are prepared as per the specified scale in the contract, however some additional maps showing information of revenue plots (numbered) within each village cannot be laid at the mentioned scale. Maps showing such information may be made/ referred or reproduced 20% zoom in & zoom to meet the need.
- Aquifer Area boundaries and CRZ have been acquired and digitized from other sources than OSGC.
- In addition to OSGC land boundaries, they have been added through ground verification & terrain research.



PROPOSED LANDUSE PLAN (2031): PKDA



Scale :- 1 : 2000

Batulibhuan - III

Legend

BOUNDARIES

- PKDA Boundary
- Zone Boundary
- Village Boundary
- Plot Boundary
- Govt Land
- CRZ 500m Buffer
- Landmarks

TRANSPORTATION USE ZONE

- Railway
- 24m Road
- 18m Road
- 12m Road
- BRTS
- Existing Road
- Bus Stand / Parking
- Jetty

RESIDENTIAL USE ZONE

- R1-Low Density Residential
 - R2-Medium Density Residential
 - R3-High Density Residential
- #### COMMERCIAL & BUSINESS USE ZONE
- C1
 - C2
 - Special Commercial / Tourism
- #### PUBLIC & SEMI-PUBLIC USE ZONE
- Institutional / Public Utilities
 - Special Institutional
 - Utility & Services Use Zone
 - Major Utility

INDUSTRIAL USE ZONE

- Industrial
- #### OPEN SPACE USE ZONE
- Recreational
- #### AGRICULTURAL USE ZONE
- Agriculture
- #### CONSERVATION USE ZONE
- Forest
 - Wet Lands
 - Water Bodies
 - Religious Centers
 - Aquifer Area

REFERENCE FILES FOR PROPOSED LANDUSE MAP

- ANNEX A : Residential Use Zone - Consisting R1, R2 and R3
- ANNEX B : Commercial Use Zone - C1 and C2
- ANNEX C : Special Commercial Zone-Tourism Related Activities
- ANNEX D : Public & Semi Public Use Zone
- ANNEX E : Special Institutional Use Zone
- ANNEX F : Light Industrial Use Zone
- ANNEX G : Utility & Services Use Zone
- ANNEX H : Open Spaces Use Zone
- ANNEX I : Transportation Use Zone
- ANNEX J : Agricultural Use Zone
- ANNEX K : Conservation Use Zone - Forest, Waterbodies, Wetlands, Coastline, Aquifer Areas

KEY MAP



Legend

- PKDA Boundary
- Selected Village
- Village Boundary - PKDA
- Village Cluster

PROJECT
COMPREHENSIVE DEVELOPMENT PLAN FOR
PKDA AREA, 2031

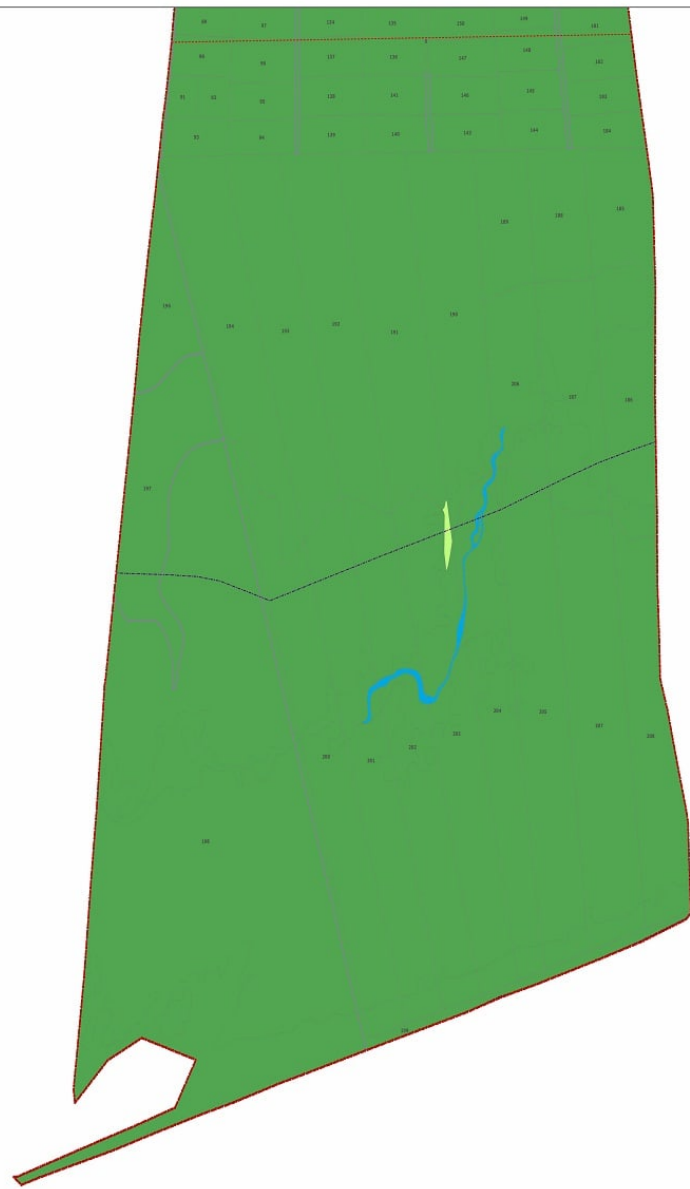
PREPARED FOR
PURI KONARK DEVELOPMENT AUTHORITY
(PKDA), PURI - ORISSA

PREPARED BY
CENTRE FOR ENVIRONMENTAL
PLANNING & TECHNOLOGY
KI CAMPUS UNIVERSITY ROAD,
NAWANGANIPURA, AHMEDABAD - 38
www.cept.ac.in Phone : (079) 28320470

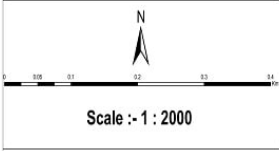
BASE DATA PREPARED BY
ORISSA SPACE APPLICATION
CENTRE, BHUBANESWAR

Disclaimer:

- Government land use information is gathered from multiple sources such as Satellite Images, Shaded relief, contour, PKDA Office and Land Office under Collection of Plot over a period of 13 years starting from Jan- 2011. Data collected has been considered as authentic and hence has been used without any further modification or updation.
- Maps are prepared as per the specified scale in the contract, however some additional maps showing information of revenue plots (numbered) within each village cannot be made at the mentioned scale. Maps showing such information may be made/ referred or re-produre 20% zoom or bigger to meet the need.
- Aquifer Area boundaries and CRZ have been acquired and digitized from other sources than OSAC.
- In addition to OSAC land boundaries, few have been added through ground verification & Survey Research.



PROPOSED LANDUSE PLAN (2031): PKDA



Batulibhuan - IV

Legend

BOUNDARIES

- PKDA Boundary
- Zone Boundary
- Village Boundary
- Plot Boundary
- Govt Land
- CRZ 500m Buffer
- █ Landmarks

TRANSPORTATION USE ZONE

- Railway
- 24m Road
- 18m Road
- 12m Road
- BRTS
- Existing Road
- Bus Stand / Parking
- ⊙ Jetty

RESIDENTIAL USE ZONE

- R1-Low Density Residential
- R2-Medium Density Residential
- R3-High Density Residential

COMMERCIAL & BUSINESS USE ZONE

- C1
- C2
- Special Commercial / Tourism

PUBLIC & SEMI-PUBLIC USE ZONE

- Institutional / Public Utilities
- Special Institutional

UTILITY & SERVICES USE ZONE

- Major Utility

INDUSTRIAL USE ZONE

- Industrial

OPEN SPACE USE ZONE

- Recreational

AGRICULTURAL USE ZONE

- Agriculture

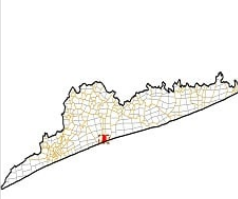
CONSERVATION USE ZONE

- Forest
- Wet Lands
- Water Bodies
- Religious Centers
- Aquifer Area

REFERENCE FILES FOR PROPOSED LANDUSE MAP

- ANNEX A : Residential Use Zone - Consisting R1, R2 and R3
- ANNEX B : Commercial Use Zone - C1 and C2
- ANNEX C : Special Commercial Zone-Tourism Related Activities
- ANNEX D : Public & Semi Public Use Zone
- ANNEX E : Special Institutional Use Zone
- ANNEX F : Light Industrial Use Zone
- ANNEX G : Utility & Services Use Zone
- ANNEX H : Open Spaces Use Zone
- ANNEX I : Transportation Use Zone
- ANNEX J : Agricultural Use Zone
- ANNEX K : Conservation Use Zone - Forest, Waterbodies, Wetlands, Coastline, Aquifer Areas

KEY MAP



- Legend**
- PKDA Boundary
 - Selected Village
 - Village Boundary - PKDA
 - Village Cluster

Disclaimer:

- Governmental/ user information is gathered from multiple sources such as Telebir Office, Bhupali web-website, PKDA Office and Land Office under Colectors Office of Pur over a period of 13 years starting from Jan- 2011. Data collected has been considered as authentic and hence has been used without any further verification or updation.
- Maps are prepared as per the specified scale in the contract, however some additional maps showing information of revenue plots (numbers) within each village cannot be laid at the mentioned scale. Maps showing such information may be traced / referred or prepared at 20% zoom in to get into more detail.
- Aquifer Area boundaries and CRZ have been assigned and digitized from other sources than OSDC.
- In addition to OSDC land landmarks, few have been added through ground verification & Survey Research.

PROJECT
COMPREHENSIVE DEVELOPMENT PLAN FOR
PKDA AREA, 2031

PREPARED FOR
PURI KONARK DEVELOPMENT AUTHORITY
(PKDA), PURI - ORISSA

PREPARED BY
CENTRE FOR ENVIRONMENTAL
PLANNING & TECHNOLOGY
K.C. CAMPUS UNIVERSITY ROAD,
NARAINIPUR, AHMEDABAD - 38
www.cept.ac.in Phone : (079) 26320470

BASE DATA PREPARED BY
ORISSA SPACE APPLICATION
CENTRE, BHUBANESWAR