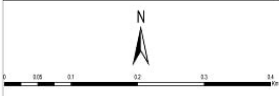


**PROPOSED LANDUSE PLAN (2031):
PKDA**



Scale :- 1 : 2000

Alanda - I

Legend

- BOUNDARIES**
- PKDA Boundary
 - Zone Boundary
 - Village Boundary
 - Plot Boundary
 - Govt Land
 - CRZ 500m Buffer
 - Landmarks

TRANSPORTATION USE ZONE

- Railway
- 24m Road
- 18m Road
- 12m Road
- BRTS
- Existing Road
- Bus Stand / Parking
- Jetty

RESIDENTIAL USE ZONE

- R1-Low Density Residential
 - R2-Medium Density Residential
 - R3-High Density Residential
- COMMERCIAL & BUSINESS USE ZONE**
- C1
 - C2
 - Special Commercial / Tourism
- PUBLIC & SEMI-PUBLIC USE ZONE**
- Institutional / Public Utilities
 - Special Institutional
 - UTILITY & SERVICES USE ZONE
 - Major Utility

INDUSTRIAL USE ZONE

- Industrial
- OPEN SPACE USE ZONE**
- Recreational
- AGRICULTURAL USE ZONE**
- Agriculture
- CONSERVATION USE ZONE**
- Forest
 - Wet Lands
 - Water Bodies
 - Religious Centers
 - Aquifer Area

REFERENCE FILES FOR PROPOSED LANDUSE MAP

- ANNEX A : Residential Use Zone - Consisting R1, R2 and R3
- ANNEX B : Commercial Use Zone - C1 and C2
- ANNEX C : Special Commercial Zone-Tourism Related Activities
- ANNEX D : Public & Semi Public Use Zone
- ANNEX E : Special Institutional Use Zone
- ANNEX F : Light Industrial Use Zone
- ANNEX G : Utility & Services Use Zone
- ANNEX H : Open Spaces Use Zone
- ANNEX I : Transportation Use Zone
- ANNEX J : Agricultural Use Zone
- ANNEX K : Conservation Use Zone - Forest, Waterbodies, Wetlands, Coastline, Aquifer Areas

KEY MAP



- Legend**
- PKDA Boundary
 - District Village
 - Village Boundary - PKDA
 - Village Cluster

**PROJECT
COMPREHENSIVE DEVELOPMENT PLAN FOR
PKDA AREA, 2031**

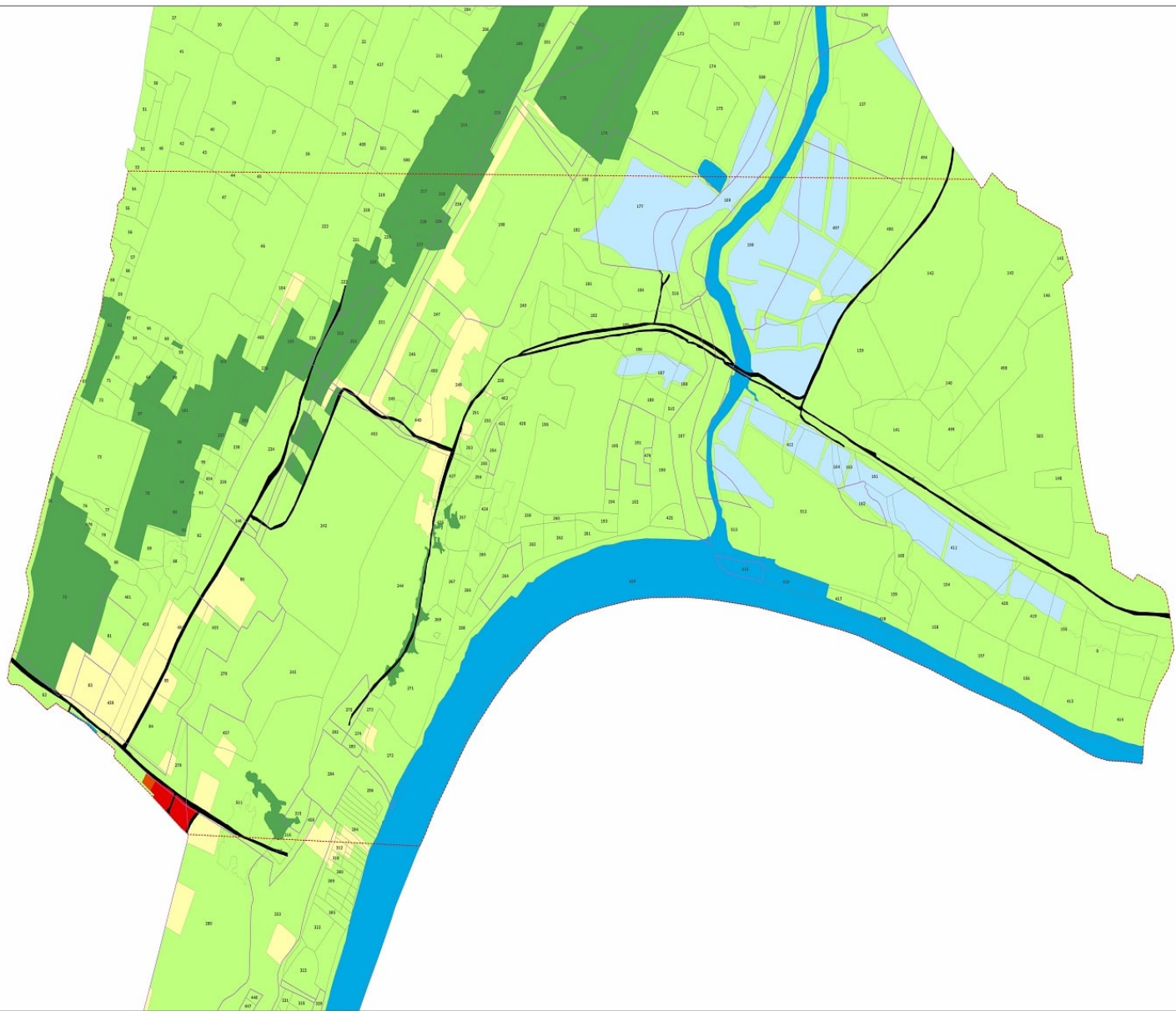
PREPARED FOR
PURI KONARK DEVELOPMENT AUTHORITY
(PKDA), PURI - ORISSA

PREPARED BY
CENTRE FOR ENVIRONMENTAL
PLANNING & TECHNOLOGY
K.C. CAMPUS UNIVERSITY ROAD,
NARAINIPURA, AHMEDABAD - 38
www.cept.ac.in Phone : (079) 26320470

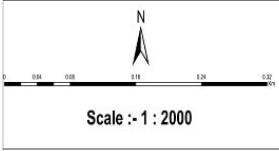
BASE DATA PREPARED BY
ORISSA SPACE APPLICATION
CENTRE, BHUBANESWAR

Disclaimer:

- Government land use information is gathered from multiple sources such as Satellite Images, District web-website, PKDA Office and Land Office under Collection of Plot over a period of 13 years starting from Jan- 2011. Data collected has been considered as authentic and hence has been used without any further verification or updation.
- Maps are prepared as per the specified scale in the contract. However, some additional maps involving information of revenue plots (numbered) within each village cannot be read at the mentioned scale. Maps showing such information may be read / referred or prepared at 200m scale or bigger for the best.
- Aquifer Area boundaries and CRZ have been acquired and digitized from other sources like GISAC.
- In addition to GISAC land boundaries, few have been added through ground verification & Survey Research.



PROPOSED LANDUSE PLAN (2031): PKDA



Alanda - II

Legend

- BOUNDARIES**
- PKDA Boundary
 - Zone Boundary
 - Village Boundary
 - Plot Boundary
 - Govt Land
 - CRZ 500m Buffer
 - Landmarks

TRANSPORTATION USE ZONE

- Railway
- 24m Road
- 18m Road
- 12m Road
- BRTS
- Existing Road
- Bus Stand / Parking
- Jetty

RESIDENTIAL USE ZONE

- R1-Low Density Residential
- R2-Medium Density Residential
- R3-High Density Residential

COMMERCIAL & BUSINESS USE ZONE

- C1
- C2
- Special Commercial / Tourism

PUBLIC & SEMI-PUBLIC USE ZONE

- Institutional / Public Utilities
- Special Institutional
- Major Utility

INDUSTRIAL USE ZONE

- Industrial

OPEN SPACE USE ZONE

- Recreational

AGRICULTURAL USE ZONE

- Agriculture

CONSERVATION USE ZONE

- Forest
- Wet Lands
- Water Bodies
- Religious Centers
- Aquifer Area

REFERENCE FILES FOR PROPOSED LANDUSE MAP

- ANNEX A : Residential Use Zone - Consisting R1, R2 and R3
- ANNEX B : Commercial Use Zone - C1 and C2
- ANNEX C : Public & Semi Public Use Zone
- ANNEX D : Special Institutional Use Zone
- ANNEX E : Light Industrial Use Zone
- ANNEX G : Utility & Services Use Zone
- ANNEX H : Open Spaces Use Zone
- ANNEX I : Transportation Use Zone
- ANNEX J : Agricultural Use Zone
- ANNEX K : Conservation Use Zone - Forest, Waterbodies, Wetlands, Coastline, Aquifer Areas

KEY MAP



- Legend**
- PKDA Boundary
 - Selected Village
 - Village Boundary - PKDA
 - Village Cluster

PROJECT
COMPREHENSIVE DEVELOPMENT PLAN FOR
PKDA AREA, 2031

PREPARED FOR
PURI KONARK DEVELOPMENT AUTHORITY
(PKDA), PURI - ORISSA

PREPARED BY
CENTRE FOR ENVIRONMENTAL
PLANNING & TECHNOLOGY
K.C. CAMPUS UNIVERSITY ROAD,
NARAYANPUR, AHMEDABAD - 38
www.cept.ac.in Phone : (079) 26320470

BASE DATA PREPARED BY
ORISSA SPACE APPLICATION
CENTRE, BHUBANESWAR

Disclaimer:
 * Governmental/your information is gathered from multiple sources such as Satellite/Office, Shiksha, satellite/Office, PKDA Office and Land Office under Collection of Puri over a period of 13 years starting from Jan- 2011. Data collected has been considered as authentic and hence has been used without any further modification or update.
 * Maps are prepared for the specified scale in the contract. However some additional maps showing information of revenue plots (numbered) within each village cannot be read at the mentioned scale. Maps showing such information may be read/referred or re-printed at 200% zoom or 50% to be read.
 * Aquifer Area boundaries and CRZ have been acquired and digitized from other sources like GIS/RS.
 * In addition to CRZAC based landmarks, few have been added through ground verification & Survey Research.



PROPOSED LANDUSE PLAN (2031): PKDA



Scale :- 1 : 2000

Alanda - III

Legend

BOUNDARIES

- PKDA Boundary
- Zone Boundary
- Village Boundary
- Plot Boundary
- Govt Land
- CRZ 500m Buffer
- Landmarks

TRANSPORTATION USE ZONE

- Railway
- 24m Road
- 18m Road
- 12m Road
- BRTS
- Existing Road
- Bus Stand / Parking
- Jetty

RESIDENTIAL USE ZONE

- R1-Low Density Residential
 - R2-Medium Density Residential
 - R3-High Density Residential
- #### COMMERCIAL & BUSINESS USE ZONE
- C1
 - C2
 - Special Commercial / Tourism
- #### PUBLIC & SEMI-PUBLIC USE ZONE
- Institutional / Public Utilities
 - Special Institutional
- #### UTILITY & SERVICES USE ZONE
- Major Utility

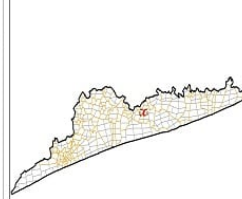
INDUSTRIAL USE ZONE

- Industrial
- #### OPEN SPACE USE ZONE
- Recreational
- #### AGRICULTURAL USE ZONE
- Agriculture
- #### CONSERVATION USE ZONE
- Forest
 - Wet Lands
 - Water Bodies
 - Religious Centers
 - Aquifer Area

REFERENCE FILES FOR PROPOSED LANDUSE MAP

- ANNEX A : Residential Use Zone - Consisting R1, R2 and R3
- ANNEX B : Commercial Use Zone - C1 and C2
- ANNEX C : Special Commercial Use Zone - Tourism Related Activities
- ANNEX D : Public & Semi Public Use Zone
- ANNEX E : Special Institutional Use Zone
- ANNEX F : Light Industrial Use Zone
- ANNEX G : Utility & Services Use Zone
- ANNEX H : Open Spaces Use Zone
- ANNEX I : Transportation Use Zone
- ANNEX J : Agricultural Use Zone
- ANNEX K : Conservation Use Zone - Forest, Waterbodies, Wetlands, Coastline, Aquifer Areas

KEY MAP



Legend

- PKDA Boundary
- Selected Village
- Village Boundary - PKDA
- Village Cluster

Disclaimer:

- Government land use information is gathered from multiple sources such as Technical Offices, Bhubaneswar, Orissa, Orissa and Land Office under Government of Orissa over a period of 13 years starting from Jan-2011. Data collected has been considered as authentic and hence has been used without any further verification or updation.
- Maps are prepared as per the specified scale in the contract, however some additional maps showing information of revenue plots (numbers) within each village cannot be read at the mentioned scale. Maps showing such information may be read / referred or prepared at 200m scale or bigger to read the best.
- Aquifer Area boundaries and CRZ have been acquired and digitized from other sources than OSAC.
- In addition to OSAC land landmarks, few have been added through ground verification & terrain Research.

PROJECT
COMPREHENSIVE DEVELOPMENT PLAN FOR
PKDA AREA, 2031

PREPARED FOR
PURI KONARK DEVELOPMENT AUTHORITY
(PKDA), PURI - ORISSA

PREPARED BY
CENTRE FOR ENVIRONMENTAL
PLANNING & TECHNOLOGY
K.C. CAMPUS UNIVERSITY ROAD,
NARANSIPURA, AHMEDABAD - 38
www.cept.ac.in Phone : (079) 26302470

BASE DATA PREPARED BY
ORISSA SPACE APPLICATION
CENTRE, BHUBANESWAR